

Lush Living

VOL. 1 ISSUE NO. 3

Winter
2016

Color of the Year

+ ROSE QUARTZ

SERENITY

Style
your home
with our tips in mind

Trend Alerts

what's hot for 2016



FEEL CATERED TO. EVEN WHEN YOU'RE DOING THE CATERING.

An LG kitchen makes it twice as easy to enjoy your own dinner party. With spacious double ovens, four-door convertible refrigeration, and industry-exclusive fully integrated steam dishwashing, LG has your evening covered from start to finish. What happens after that, is up to you.





COMPLETE YOUR KITCHEN EVENT



Complete your kitchen with up to
\$7,000 worth of Wolf Gourmet products!

Purchase a combination of Sub-Zero and Wolf appliances now, and get up to \$7,000 worth of Wolf Gourmet products, from countertop appliances to cookware. The "Complete Your Kitchen" offer is good through March 31, 2016.

For details, visit subzero-wolf.com/promotion

ESR
EXCLUSIVE
SALES & RENTALS

Exclusive Sales and Rentals

210 Penn Street • El Segundo, CA 90245

310.978.4617 • info@exclusivesalesandrentals.com

CONTENT

8

COLOR OF THE YEAR

It's twins! For the first time ever, Pantone anointed two colors of the year for 2016. Rose Quartz and Serenity are the perfect pair.

15

WHAT'S IN THIS 2016?

Can we top a year as stylish as 2015? We're in for a real treat with this year's top kitchen trends! See what's hot this new year.

19

SET OF THE SEASON

Check out who won our choice for this year "Set of the Season."

21

BRANDS & PRODUCTS

Check out ESR's unbeatable selection of brands to beautify your kitchen. Browse our products and make your kitchen experience the best it can be.

PUBLISHER'S NOTE

Welcome to the Winter edition of *Lush Living*. Vol. 1
Issue No. 3.

As I write this its nearly 80 degrees outside. Is this really **winter**? What happened to our dreaded but much needed El Niño? Anyone need sandbags? I have a few I'm not using!

In this issue we begin by featuring Pantone's surprise pick for color of the year. Any ideas why it's a surprise? Then we take a look at some developing 2016 Kitchen décor trends. Next up is our very popular Set of the Season award. Congratulations to **Set Decorator Caroline Perzan!** As always, let us know if you have suggestions for our next winner in Spring!

Also check out this editions featured fabulous **brands and products!** There is some really cool and sleek kitchen stuff out there. Makes me want to remodel my kitchen every month or at least a flip a house or two.

Again, I have to give a big thank you to Jenn Viola and her team including Jessica Gualotuna and Anna Pavlova for their hard work in putting this edition together. **Thanks ladies. Nice Job!**

Finally, I need to thank our generous sponsors and advertisers. **Thanks for your support!** If you're reading this and want to get in on the next edition, just let us know.

We hope you have a warm (but not too warm) winter and take the time to relax and enjoy some Lush Living until then..... **Enjoy!**

Douglas Wroan-Publisher

LUSH LIVING

e - m a g a z i n e

PUBLISHER Douglas Wroan

EDITOR John Niro

CREATIVE DIRECTOR Jenn Viola

FEATURES DIRECTOR Jessica Gualotuna

FEATURES ASSISTANT Anna Pavlova

Connect with us...



LIKE US ON FACEBOOK

facebook.com/ExclusiveSalesandRentals



TWEET WITH US ON TWITTER

@ExclusiveSalesR



FOLLOW US ON INSTAGRAM

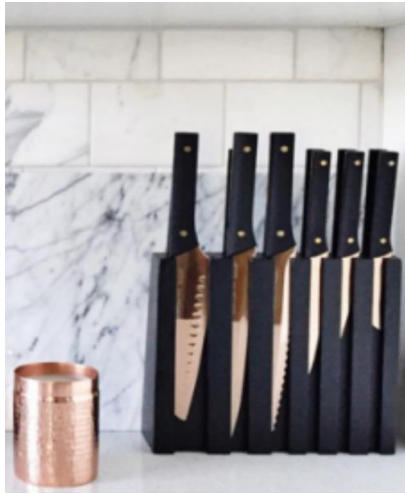
@exclusivesalesrentals



PIN WITH US ON PINTEREST

pinterest.com/exclusivesalesr





ESR EXCLUSIVE SALES & RENTALS





EXCLUSIVE SALES AND RENTALS

ESR guarantees the lowest prices on leading brand appliances.
Our hassle-free service takes care of delivery and installation.

210 Penn Street | El Segundo CA 90245 | 310.978.4617
info@exclusivesalesandrentals.com | www.ExclusiveSalesAndRentals.com






Ideas on Home Décor




ROSE QUARTZ

+ SERENITY

How to work these colors in your home



Pantone, the “it” color authority, has surprised us this year with its announcement of the 2016 color of the year! Sometimes you simply cannot decided on just one of anything, so why not do two...two is better than one, right? And the colors of the year, drum roll please, are Serenity and Rose Quartz!



Straight from the source are Pantone’s words of colors: “Rose Quartz is a persuasive yet gentle tone that conveys compassion and a sense of composure. Serenity is weightless and airy, like the expanse of the blue sky above us, bringing feelings of respite and relaxation even in turbulent times.”



Rose Quartz will add some warmth and composure to any room. With that in mind, here are some ideas for you!





Serenity creates a calm, relaxed atmosphere in any room. If you're looking to cool the mood, this is the color for you.



*Let's
make it
work
in style*

If you want to go for more of a mellow vibe we recommend a pink and grey combination.



Kitchen accessories in serenity or rose quartz will transform your home into your peaceful abode



A **statement wall**, seen here in pale blue, will help you decorate your kitchen playfully.





S M E I G

WRITE
ON ME

FISHER & PAYKEL
DCS OUTDOOR GRILL RANGE



Fisher & Paykel

KITCHEN TRENDS TO WATCH FOR IN 2016



White-on-white kitchens are one of the most popular trends this season.



The modern White Chair is another trend this season. The curves and rounded lines bring an elegance to the kitchen. Add textures and fabrics for a luxurious touch.



Style. Sleek. Sophisticated.



There are so many ways to incorporate white colors to your kitchen.



Marble Lamps introduce a sense of richness to your kitchen.

www.ExclusiveSalesAndRentals.com





Copper and white is a new trend this year. Make your guests feel welcome in your kitchen with soft lighting.



Add more color to your kitchen! Check out this copper trash can.



Marble candles will add a classic look.

BUY THE WHOLE SNAPPER

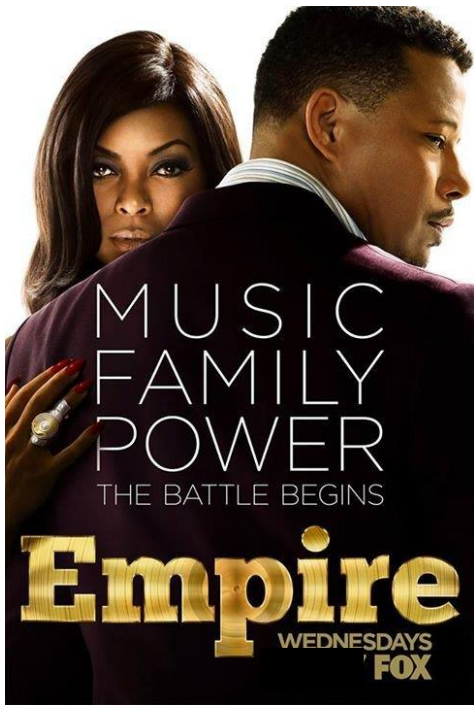
With our Preserva™ refrigerator, your most daring ingredients stay fresher longer.

Ideal temperature and humidity levels make for crisper produce and more flavorful food, an advanced air filter absorbs strong smells, and our savvy storage options make sure that big fish will fit. So bring home the cilantro, lemongrass and ginger, and steam that snapper Southeast Asian-style. Because when all your greatest feasts start fresh, **there's so much more to make.**

Find more information and culinary inspiration at kitchenaid.com.

KitchenAid®
www.ExclusiveSalesAndRentals.com

SET OF THE SEASON



Set decorator veteran, Caroline Perzan sets the tone of the interiors by giving it an elegant touch with appliances from Sub Zero and Wolf.



WGC0100S

Wolf Gourmet - Countertop Oven

Wolf Gourmet's new countertop oven features 6 Cooking Modes, 5 Heating Elements, an Easy-Glide Rack, Stainless Non-Stick Interior, and an Integrated Temperature Probe.



GR606CG

Wolf Gas Range

Wolf gas ranges offer standard features such as an infrared oven broiler, convection oven, dual-stacked sealed surface burners and those signature large red control knobs.



A music mogul plans for the future of his empire and family. Starring with Terrance Howard and Taraji Henson on Fox.



Design your kitchen that is suitable to your style. Check out **Empire** for great ideas!



FOX

648PROG

Sub-Zero 48" Side by Side

Sub-Zero's PRO 48 Refrigerator/Freezer with Glass door is a true masterpiece of preservation.

Wolf Counter Blender

Countertop Blender with 64 oz. capacity, 4 program settings, any speed pulse, LCD control panel and stainless steel construction.



WGBL100S

BRANDS AND PRODUCTS

SUB-ZERO | WOLF | TRUE | SHARP | AGA | MARVEL
ASKO | FISHER & PAYKEL | DCS | SMEG | GE | WHIRLPOOL
KITCHENAID | FRIGIDAIRE | MAYTAG | LG | VENT-A-HOOD





MAYTAG

Maytag refrigerators built to stay cool without breaking a sweat. These refrigerators are made with one thing in mind: dependability.



FRIGIDAIRE

Frigidaire refrigerators offer quick access to fresh ingredients with organization solutions designed for space optimization. They resist fingerprints and clean easily.



KITCHENAID

KitchenAid refrigerators defy time to keep food fresher longer, so your ingredients are ready when you are. These refrigerators store food smarter.



MARVEL

Marvel specializes in high capacity refrigerators and freezers designed exclusively for you. Marvel full-size integrated refrigeration solutions are never mass produced. They're made just for you with years of experience, craftsmanship and the highest quality components.

Sub-Zero pioneered the concept of built-in refrigeration, blending its iconic refrigerators into the world's most beautiful kitchen designs. Think of the PRO 48 as an 800-pound monument to food preservation – equal parts sculpted metal design statement and culinary secret weapon. Freezer on the left. Refrigerator on the right. High performance through and through.

SUB-ZERO





TRUE

TRUE Undercounter Refrigerator Drawers are the ideal addition to your home, both indoor and out. They don't simply provide extra storage—they also help organize the way you use your kitchen. Designed to enhance an existing space or to serve as a focal point for your brand new kitchen.



SUB-ZERO

Sub-Zero refrigeration is anywhere refrigeration. Whether you choose integrated drawers, beverage centers, undercounter refrigerators or ice makers, all units fit seamlessly with the flow of your home and the way you live.



KITCHENAID

KitchenAid Undercounter Refrigerators are one cool co-host. Delight your guests and their senses with undercounter refrigerators designed to entertain in style.



SUB-ZERO

Better storage for the bottle means more enjoyment in the glass. Sub-Zero wine preservation units act not merely as coolers but as guardians against heat, humidity, vibration and light – the four enemies that can rob wine of its complexity and character.



TRUE

Fine wine requires precision. True's Dual Zone wine storage system is meticulously designed to preserve your best bottles.



WOLF

Give your kitchen an iconic centerpiece. Wolf gas and dual fuel ranges are unmistakable heirs of the cooking instruments that have been the choice of professionals for eight decades – and are now the favorite for discerning home chefs.

DCS

DCS hand-built ranges are powerful enough to reach high temperatures quickly, sealing in flavor, and precise enough to maintain exact temperatures for as long as needed.



AGA

The efficient radiant heat and insulated design minimizes fuel consumption and creates optimal cooking conditions without the drying, direct heat used in traditional ranges. Gentle radiant heat locks in moisture preserving flavor, nutrients and the integrity of the foods being cooked.



WHIRLPOOL

Leave unnecessary meal prep behind with Whirlpool ranges that fit your kitchen and deliver delicious results. True convection cooking helps seal in flavor and juices for perfect results in less time than non-convection ovens.





WOLF

Behind the sculpted lines of Wolf hoods, there's a lot of hardnosed thinking. Bright LED lighting with multiple settings illuminates the cooking surface. Powerful multi-speed blowers whisk away smoke and odors.

VENT-A-HOOD

Featuring the exclusive Vent-A-Hood Premium Power Lung Blower with the Centrifugal Filter chamber, built together and working as one in a single housing. The Power Lung (K-Series blower) and filter eliminate the dirty, greasy, old-technology mesh screen filters.



GE

GE warming drawers provide temperature settings from 80 degrees to 210 degrees to deliver flexible warming performance for a variety of needs. It offers a smooth appearance and maximizes drawer space.



DCS

Often when you're cooking you need many dishes warm at the same time. DCS warming drawers are the deepest in the category. That means enough space for up to 6 standard-size dinner plates stacked side by side.



WOLF

These are the Wolf ovens that took the cooking world by storm, bringing professional performance into the home kitchen. New M Series ovens and time-tested E Series utilize dual convection to control heat and airflow so every dish comes out exactly as you intended.

KITCHENAID

KitchenAid wall ovens are as big as your imagination. Let these fuel your culinary passion and inspire your next masterpiece in the kitchen. Even-Heat Technology creates even results, every time.



FISHER & PAYKEL

Fisher & Paykel Built-in Ovens are designed for a range of cooking styles, with generous capacity, high performance and a full range of functions.



WOLF

The Wolf coffee system doesn't just make great coffee; its style and accessories are pleasing homeowners and designers alike. And because it isn't plumbed, it is an easy build-in to any room.



SMEG

Smeg coffee systems are very user-friendly as an LCD display gives you immediate, clear information and can be programmed to automatically switch on whenever you want.



ASKO

Design engineers have maximized the loading capacity of ASKO dishwashers. With identical exterior dimensions to a standard dishwasher, you will notice the difference inside.

AGA

AGA's dishwashers are the perfect blend of function and style with their trademark contour design, engineered to fit beautifully into your AGA kitchen.



SHARP

Sharp's Microwave Drawer lets you choose a location that works for your lifestyle. Cooking is easier and faster when the Sharp Microwave Drawer Oven is installed adjacent to your food preparation area: in islands, peninsulas and under the counter.



DCS

DCS microwaves have spacious interiors and the option of a convection model gives you access to professional quality cooking with speed. The Over-the-Range Microwave delivers temperatures from 100° F to 450° F.



ESR
EXCLUSIVE
ESR
SALES & RENTALS

210 Penn St El Segundo CA 90245
310.978.4617 | www.ExclusiveSalesAndRentals.com